

POST THESE OPERATING INSTRUCTIONS NEAR DISPOSER FOR READY REFERENCE

4 EASY STEPS TO ASSURE PROPER, CAREFREE OPERATION & LONG LIFE

Read and understand all the instructions before using the disposer. See important safety information on the reverse side.

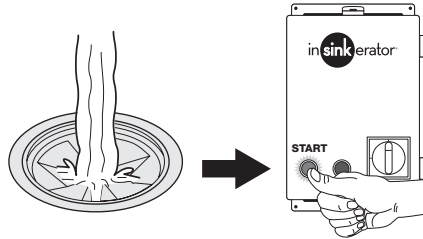


This is the safety alert symbol. It is used to alert you to potential physical injury hazards. Obey all safety messages that follow this symbol to avoid possible injury or death.

1

IMPORTANT: Do not feed food waste into disposer until unit is started and water is running.

PUSH THE **START** BUTTON on the control box to put the disposer in operation. Before you start feeding food waste into the disposer, make sure that a steady stream of water is flowing into the disposer.



2

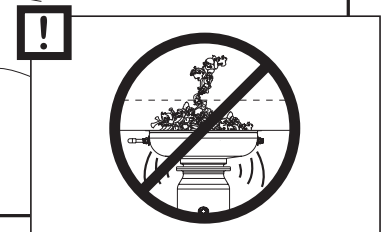
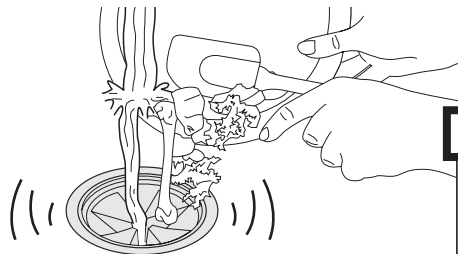
FEED FOOD WASTE into the disposer in a **steady, continuous** flow.

Recommended cold water requirements:

H.P.	STANDARD
1	5 GPM
2	7 GPM
3, 5	8 GPM
10	10 GPM

Water Volume Adjustment:

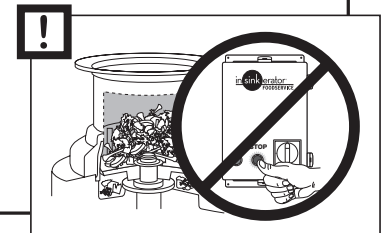
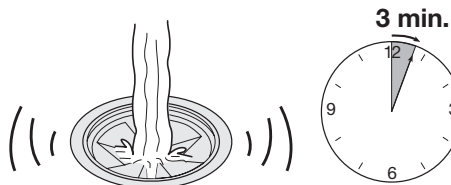
For all models the top of the swirling water should occasionally crest to the body water inlet.



3

LET WATER RUN for approximately three (3) minutes to clear the disposer of all ground waste.

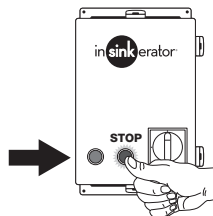
Do not stop disposer with food waste in it.



4

PUSH THE **STOP** BUTTON on the control box to stop the disposer's operation.

To prevent accidents, make sure the disposer is shut off before you leave it. Do not put your hands into the disposer while it is in operation.



VOLTAGE/PHASE AVAILABILITY

Model	Voltage, Hz	Phase	Model	Voltage, Hz	Phase
SS100-28	115/208/230V	1Ph	SS300-27	208/230/460V	3Ph
SSC100-1	115/208/230V	1Ph	SS500-22	230/460V	3Ph
SS100-35	100/200/230V, 50/60Hz	1Ph	SS500-23	415V	3Ph
SS100-47	208/230/460V, 60Hz	3Ph	SS500-27	380V	3Ph
SSC100-3	208/230/460V, 60Hz	3Ph	SS500-28	208/230/460V, 60Hz	3Ph
SS100-50	208-230/460/3	3Ph	SS500-30	208/230/460V	3Ph
SS200-27	115/208/230V	1Ph	SSC500-1	208/230/460V	3Ph
SS200-31	115/208/230V	1Ph	SS1000-10	208/230/460V, 60Hz	3Ph
SSC200-1	115/208/230V	1Ph	SS1000-12	208/230/460V	3Ph
SS200-35	208/230/460V, 60Hz	3Ph			
SS200-36	208/230/460V, 60Hz	3Ph			
SS200-39	380/50-60Hz	3Ph			
SSC200-3	208/230/460V, 60Hz	3Ph			
SS300-21	415 V	3Ph			
SS300-22	220 V	3Ph			
SS300-23	380V, 50/60Hz	3Ph			
SS300-25	208/230/460V, 60Hz	3Ph			

IMPORTANT SAFETY INSTRUCTIONS

- !** This appliance is not intended for use by persons (including children) with reduced physical sensory or mental capabilities, or lack of experience and knowledge, unless they have been given supervision or instruction concerning use of the appliance by a person responsible for their safety.

Children should be supervised to ensure that they do not play with the appliance.
- !** **DO NOT** operate without factory-recommended safety guards.
- !** **DO NOT** put your hands into the disposer while it is in operation.
- !** Switch off or unplug the appliance before attempting to free a jammed rotor with an implement.
- DO NOT** put any of the following items into the disposer: clam or oyster shells, drain cleaner, glass, china, plastic wrap, large bones, metal objects, explosive materials, extremely hot water, grease, oil, or syrup.
- DO NOT** overload disposer with excess amounts of food waste and water. The unit will consume food waste faster when you feed it steadily.
- DO NOT** touch the water valve after the correct flow of water is achieved by adjusting plumbing valves. Grinding efficiency will be decreased if the water swirl is more than 1/2 way up the disposer body.
- DO NOT** stop disposer with food waste in it; let it run for approximately three (3) minutes to clear itself of all ground waste. This will help maintain a clean and odor-free unit and avoid drainline stoppage.

RELEASING DISPOSER JAM

If the disposer stops suddenly it may be due to overloading or a foreign object (metal) has caused a jam condition.

Turn control to off position and complete following steps:

1. Insert dejamming wrench (not supplied) slot down through sink opening. Place slot over raised bars found on top of rotating shredder.
2. Twist dejamming wrench back and forth to free jam. Rotating shredder should revolve freely when jam is released.
3. Remove all foreign materials.
4. Allow disposer to cool for 3-5 minutes after it stops running. Press red reset button to reset overload protector. Never strike reset button with objects.
5. If disposer remains inoperative after following these steps, contact nearest InSinkErator Factory Authorized Service Center.

Call **1-800-845-8345** to find Service Center nearest you.

